

# APL 3500 Electric

**Automatic Print & Apply Systems All Electric, technologically designed to work without compressed air on production lines, in real time and non-real time.**

**APL 3500E Series** have been developed using electric technology, avoiding the use of compressed air, being the most environment-friendly industrial systems in its category. In addition, it reduces the energetic consumption costs.

**APL 3500E Series**, meets the most strict requirements in terms of reliability, robustness and compatibility with the industrial standards, established by GS1 International for packaging.

Its modular design allows the **APL 3500E Series** to Print & Apply on the following positions:

-  Top
-  Side
-  Corner

Technologically designed to meet the new production line requirements, in terms of high speed and high production volume, APL 3500E Series can print and apply labels with variable data, up to 180 cases/minute.

**APL 3500E Series** are easy to install and integrate and offering a wide connectivity range to any IT or automatization system, through UBS Label CS® and UBS Labman® Software, that allow to manage and transmit data to or from any ERP, MES, WMS or DBMS.

**APL 3500E Series** meet the GS1 global standards of codification and traceability with ANSI barcode printing and grade A and B in GTIN codes.



## PRINT&APPLY SYSTEMS

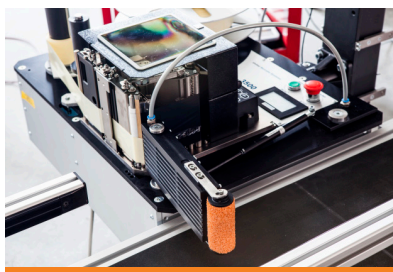
-  **Automatic Print & Apply Real Time Labeling Systems, for any group packaging (cases, packs, trays, bags, etc.).**
-  **Top, side, front, rear, corner and double side**
-  **Speed up to 180 labels/min**
-  **Fully manufactured out of anodized aluminium**
-  **Technologically designed to meet the highest requirements and highest production volumes.**



# APL 3500

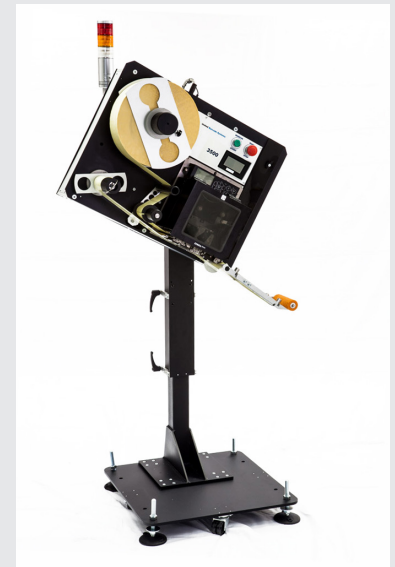
## Technical Features

PRINT ENGINE	ZEBRA, DATAMAX, SATO...
PRINTING RESOLUTION	From 203 up to 600 dpi (depending on print engine and printing speed)
REEL OF LABELS	Máx. diameter: up to 400 mm
REEL OF RIBBON	Max. length: 600 m (depending on print engine specifications)
LABELING SPEED	Up to 180 labels/min (depending on print engine and packaging dimensions)
INTERFACE	Ethernet, USB, Wifi, RS232 (depending on print engine specifications)
INTERFACE I/O	3 I/O free, expandable
DISPLAY	3.5" Touch Screen
WEIGHT	APL: 40kg (88.20 lb) - Telescopic support: 75kg (165.3 lb)
DIMENSIONS	APL: 391 x 675 x 515 mm (15.4" x 26.5" x 20.3")
POWER SUPPLY	110/240 VAC. Frequency 50 to 60 Hz
ENVIRONMENT	From +5°C up to 40°C
HUMIDITY	Between 20% - 85% non-condensing



## PRINT&APPLY SYSTEMS

- ✓ **Compact, solid, reliable and compatible with any OEM print engine on the market.**
- ✓ **Meets GS1 global standards of codification and traceability with ANSI barcode printing and grade A and B in GTIN codes**



## United Barcode Systems

Labeling, Coding & Marking



[www.ubscore.com](http://www.ubscore.com)

*The right choice*

**UBS HEADQUARTERS** (+34) 902 127 721  
**UBS NORTH AMERICA** (+1) 760 480 0777  
**UBS SPAIN** (+34) 902 195 591  
**UBS MEXICO** (+52) 55 5572 4892  
**UBS BRAZIL** (+55) 11 2709 8640  
**UBS ITALY** (+39) 0224 972 120

[info@ubscore.com](mailto:info@ubscore.com)  
[info.usa@ubscore.com](mailto:info.usa@ubscore.com)  
[info.espana@ubscore.com](mailto:info.espana@ubscore.com)  
[info.mexico@ubscore.com](mailto:info.mexico@ubscore.com)  
[info.brasil@ubscore.com](mailto:info.brasil@ubscore.com)  
[info.italy@ubscore.com](mailto:info.italy@ubscore.com)